

RapidClean

National Supply Solutions

NATIONAL STRENGTH - LOCAL SERVICE



MATTING GUIDE



MAKING FLOORS SAFE, STAFF HAPPY
& KEEPING BUILDINGS CLEAN



RapidClean

National Supply Solutions
NATIONAL STRENGTH - LOCAL SERVICE



ABOUT US

RapidClean is an Australian & New Zealand owned national company with over 50 independently owned stores. RapidClean has been trading for over 30 years and has a collective turnover exceeding \$100 million per year, employs over 150 people and has over 100 delivery vehicles.

Our business is made up of cleaning supply experts operating their own stores. Our aim is to provide our customers with the support of a national organisation while providing a local service, single source, cost effective one-stop-shop solution.

Our stores stock major brands of industrial, commercial and environmentally friendly cleaning and packaging products. We select only the best suppliers and products and we stand by the quality of the products we stock. Our collective buying power gives us the ability to offer our customers quality products at the best prices.

WHY CHOOSE US?

- ✓ Established for over **30 years** and have an experienced, knowledgeable team
- ✓ We have over **50 stores** in Australia & New Zealand and can supply nationally
- ✓ Our stores are owned by **locals** and you have direct contact with the store owner
- ✓ We are **Australian & New Zealand owned** and all profits stay in Australia & New Zealand
- ✓ We have a **huge range** of cleaning, catering, packaging & safety supplies
- ✓ We **sell and service** cleaning equipment
- ✓ We offer **National Accounts** for large customers
- ✓ Our products are **commercial** quality
- ✓ We have **huge buying power** which enables us to pass on the savings to our customers



PUTTING THE **CORRECT** MAT UNDER FOOT



ENTRANCE MATS



ANTI-FATIGUE MATS



ANTI-SLIP MATTING



CHAIR MATS



LOGO MATS

CONTENTS

ENTRANCE MATS

Indoor

Esteem Ribbed II	5
Floor Shield	5
Ribbed Mat	6
Wondersorb	6
Prestige Mat	7
Absorba	7

Outdoor

Clean Loop	8
Rubber Brush Scraper	8

Commercial Entrance Matting Runners

Opti-Sorb	9
Opti-Scrape	9
Premium Scrape	10
Dura Scrape	10
Coco Brush II	11
PVC Backed Coir	11

LOGO MATS

Inkjet Print Plus	13
Tough Scrape Design	13

ANTI-FATIGUE MATS

Dry Area

Soft Foot Diamond Deluxe	15
Comfort Stand II	15
Air Grid	16
Dura Step	16

ANTI-FATIGUE MATS

Wet Area

Safety Cushion	17
Cushion Ease	17
Comfort Clean	18
Cushion Tread	18
Engineers Mat	19
Ultra Stand	19

Modular Safety Mats

Solid Top Anti-Fatigue	20
Ergo Tread Modular	20

Specialised Safety Mats

Welding Mat	21
Boot Dip Mat	21

ANTI-SLIP MATTING

True Grip	23
Maxi Grip	23
Comfort Clean Grit Top	24
Clean Loop Unbacked	24
Safeguard Deluxe	25
Utility Matting	25

CHAIR MATS

27

GUIDES

Product Usage Guide	28
Chemical Resistance Guide	29
Cleaning & Maintenance Guide	30-31



ENTRANCE MATS

HOW TO CHOOSE THE RIGHT ENTRANCE MAT?

LOCATION:

Determining whether your mat is going indoors or outdoors is important. Outdoor mats are designed to withstand the external elements and remove heavy debris before entering the facility whereas indoor mats are intended to collect moisture and fine dust, keeping the inside floors clean.

FOOT TRAFFIC VOLUME:

It's important to consider the number of employees and visitors that enter and exit your facility daily. Entrance mats need to have the right level of wear resistance and durability to withstand the expected volume of foot traffic in the area to ensure that the mat remains functional for its entire life.

ENVIRONMENT:

The environment outside your facility is an important factor when choosing a mat. If you work in a tropical area where there is heavy rain, then absorption might be your number one concern. However, if you are in a dry area, it's important to have a mat that scrapes and traps dirt, sand and other debris from shoes.

WHY DO WE NEED ENTRANCE MATS?

The most important reason we need entrance mats is for safety. Entrance mats remove dirt and debris, while absorbing moisture to prevent slips and trips. Entrance mats also provide a layer of protection to floors in high traffic areas, reduce interior maintenance costs and keep the internal environment clean and healthy.

PRODUCT PERFORMANCE GUIDE

ABSORPTION:

The level of moisture absorbed into the mat from shoes/outdoor weather

APPEARANCE:

The rate of attractiveness of the mat

SOIL REMOVAL:

The degree of abrasiveness and scraping surface that removes dirt and debris trapping it into the mat

WEAR:

How well the mat lasts in high traffic areas over time

ESTEEM RIBBED II

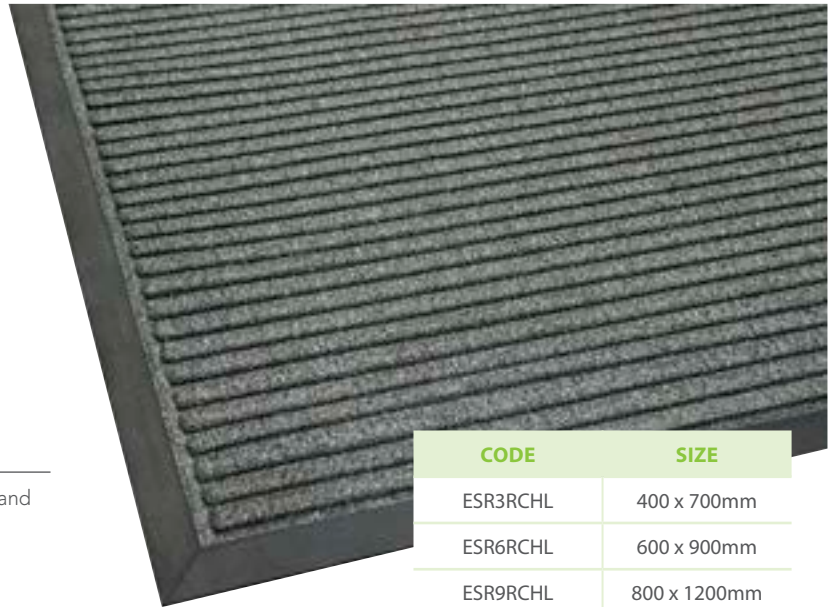
Esteem Ribbed II is an extremely durable, hardwearing entrance mat used for medium traffic situations.

PRODUCT PERFORMANCE

ABSORPTION	✓✓✓✓
APPEARANCE	✓✓✓✓
SOIL REMOVAL	✓✓✓
WEAR	✓✓✓✓

FEATURES

- Stylish wide ribbed polypropylene surface absorbs water and scrapes shoes clean
- Tough all weather construction for indoors or covered outdoors
- Low profile with safety borders
- Heavy duty rubber backing
- Easy to clean by vacuum or hose



CODE	SIZE
ESR3RCHL	400 x 700mm
ESR6RCHL	600 x 900mm
ESR9RCHL	800 x 1200mm
ESR12RCHL	900 x 1500mm
ESR18RCHL	1200 x 1800mm

7mm thick

FLOOR SHIELD

Floor Shield is a light to medium traffic entrance mat for indoor entrances

PRODUCT PERFORMANCE

ABSORPTION	✓✓✓✓
APPEARANCE	✓✓✓✓
SOIL REMOVAL	✓✓
WEAR	✓✓

FEATURES

- Absorbs water and dirt from shoes while hiding it from sight
- Attractive smooth plush pile mat for medium traffic areas
- Easy to clean and dries quickly
- Solution dyed polypropylene to prevent fading

CODE	SIZE
PP23	600 x 900mm
PP34	900 x 1200mm
PP35	900 x 1500mm

6mm thick

RUNNER WIDTHS:

- 900mm
- 1200mm
- 1800mm



Smoke

Blue

Red



ENTRANCE MATS - INDOOR

RIBBED MAT

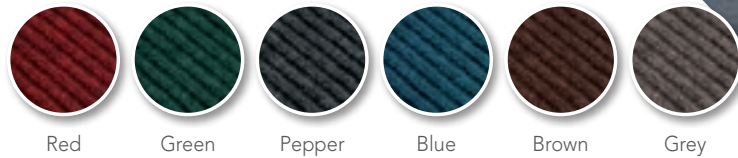
Ribbed mat is a medium traffic entrance mat for indoor or outdoor use.

PRODUCT PERFORMANCE

ABSORPTION	✓✓✓✓
APPEARANCE	✓✓✓
SOIL REMOVAL	✓✓✓
WEAR	✓✓✓

FEATURES

- Effective and economical mat for medium traffic entrances
- Coarse fibres scrape dirt and debris from footwear
- Attractive bi-level construction traps dirt
- Solution dyed to prevent fading
- Easy to clean and dries quickly



CODE	SIZE
RM23	600 x 900mm
RM35	900 x 1500mm
RM46	1200 x 1800mm

8mm thick

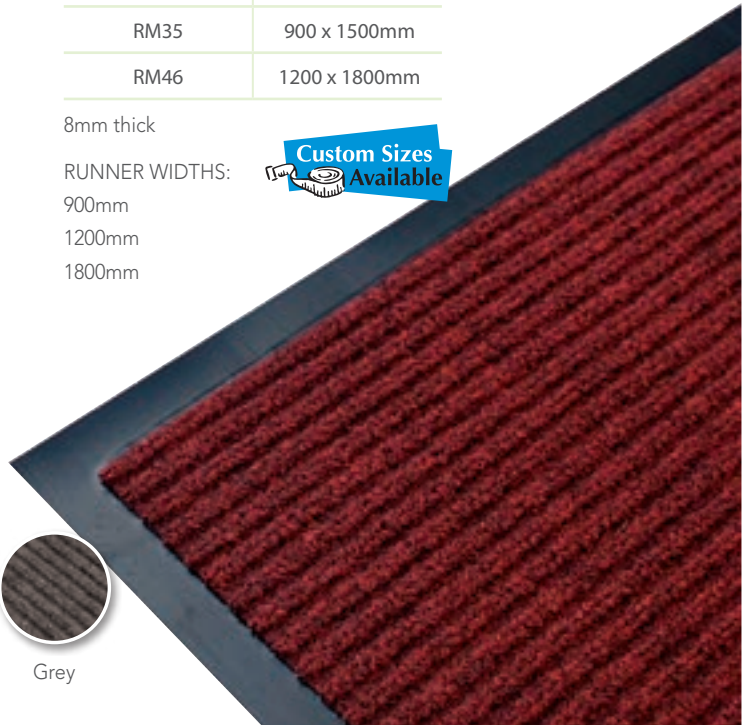
RUNNER WIDTHS:

900mm

1200mm

1800mm

Custom Sizes Available



WONDERSORB

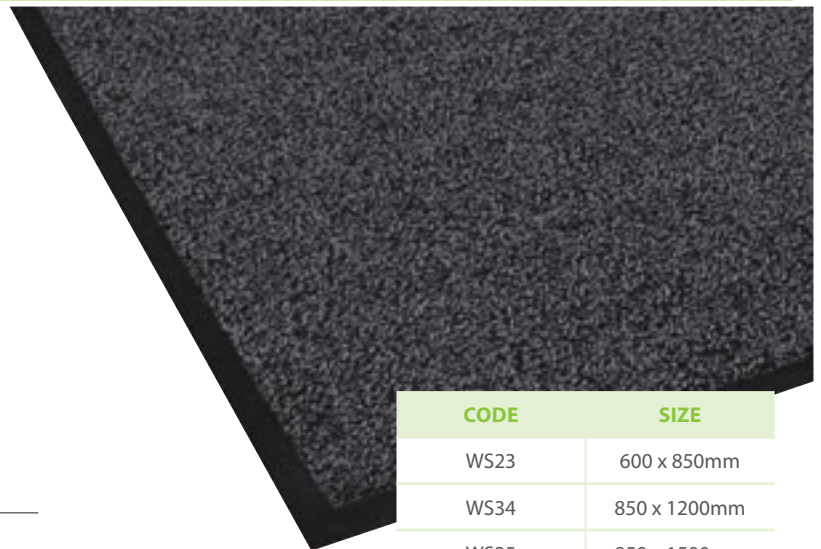
Wondersorb is a fully launderable entrance mat used in medium to high traffic situations. It is ideally placed at entrances indoor or outdoor, in hallways, lobbies or reception areas

PRODUCT PERFORMANCE

ABSORPTION	✓✓✓✓✓
APPEARANCE	✓✓✓✓
SOIL REMOVAL	✓✓
WEAR	✓✓✓

FEATURES

- Ultra absorbent surface retains large amounts of liquid
- Machine washable
- Dual zone gripper backing will grip to any floor type
- Mat surface is 100% recycled – made from scrap PET bottles
- Nitrile rubber backing won't crack or tear



CODE	SIZE
WS23	600 x 850mm
WS34	850 x 1200mm
WS35	850 x 1500mm
WS46	1150 x 1750mm
WS310	850 x 3000mm

7mm thick

PRESTIGE MAT - DIAMOND

Prestige mat is a hardwearing indoor or outdoor mat for medium traffic entrances.

PRODUCT PERFORMANCE

ABSORPTION	✓✓✓✓
APPEARANCE	✓✓✓✓✓
SOIL REMOVAL	✓✓✓✓
WEAR	✓✓✓✓

FEATURES

- Attractive, hard wearing mat for medium traffic entrances
- Heavy duty rubber backed with a stylish polypropylene surface
- All weather construction suitable for indoor and outdoor
- Unique Non Slip Backing designed to hold the mat down onto your floor
- Raised reinforced rubber border helps trap moisture and dirt

CODE	SIZE
PSM3D	450 x 750mm
PSM6D	600 x 900mm
PSM12D	900 x 1500mm
PSM18D	1200 x 1800mm

11mm thick



ABSORBA

Absorba mat is a heavy duty mat for high traffic entrances. It can be used indoor or outdoor under cover.

PRODUCT PERFORMANCE

ABSORPTION	✓✓✓✓✓
APPEARANCE	✓✓✓✓
SOIL REMOVAL	✓✓✓✓✓
WEAR	✓✓✓✓

FEATURES

- Heavy duty indoor/outdoor mat for high traffic areas
- Grippers on underside minimise movement
- Raised reinforced rubber dam border
- Reinforced rubber raised squares to prevent pile from crushing, improving wear ability
- This product has been Slip Resistance tested by AWTA Product Testing using the Wet Pendulum Test Method. It tested P5 (highest possible classification) in accordance with the National Construction Code (NCC) specifications



CODE	SIZE
AB23PEP	620 x 860mm
AB35PEP	860 x 1440mm
AB38PEP	860 x 2400mm
AB310PEP	860 x 2970mm
AB46PEP	1140 x 1690mm
AB48PEP	1140 x 2400mm
AB410PEP	1140 x 2970mm
AB68PEP	1750 x 2400mm
AB610PEP	1750 x 2920mm
AB620PEP	1800 x 6045mm



RUNNER WIDTH:
1800mm (Pepper)

8mm thick

CLEAN LOOP

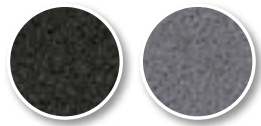
Clean Loop matting is a heavy duty outdoor scraper mat used in medium traffic areas.

PRODUCT PERFORMANCE

APPEARANCE	✓✓✓✓
SOIL REMOVAL	✓✓✓✓✓
WEAR	✓✓✓✓

FEATURES

- Can be used indoors or outdoors
- Gives a powerful scrub to the base of footwear
- Collects dirt and debris from footwear and hides it from sight
- Easy to clean – can be hosed, shaken or vacuumed out
- Ideal for coastal and sandy areas



Black

Grey



CODE	SIZE
CE23	600 x 900mm
CE35	900 x 1500mm
CE46	1200 x 1800mm
CEB1200	1200mm Wide Runner

12mm thick



RUBBER BRUSH SCRAPER

Rubber Brush Scraper is a heavy duty outdoor scraper mat.

PRODUCT PERFORMANCE

APPEARANCE	✓✓✓
SOIL REMOVAL	✓✓✓✓
WEAR	✓✓✓✓

FEATURES

- Heavy duty outdoor scraper mat
- Rubber studs dislodge dirt from shoes
- Slip resistant base
- Ramped edge for added safety
- Effective outdoor mat



CODE	SIZE
RBB	610 x 810mm
RBM	710 x 1070mm
RBL	910 x 1830mm

11mm thick

OPTI-SORB

Opti-Sorb is an attractive and high performing absorbent entrance mat designed for high traffic commercial business entrances. Conforms to AS ISO 9239.1 for flooring products

PRODUCT PERFORMANCE

ABSORPTION	✓✓✓✓✓
APPEARANCE	✓✓✓✓✓
SOIL REMOVAL	✓✓✓✓
WEAR	✓✓✓✓

FEATURES

- Ultra-absorbent entrance mat
- Aggressive scraper fibres remove light dirt and debris
- Non-skid backing prevents movement
- Can be recessed into the floor or edged for loose laying
- Attractive and stylish design
- Ideal for commercial buildings, shopping centres and education facilities



CODE	SIZE
OS135CHL	1350mm Runner
OS200CHL	2000mm Runner

7.5mm thick



OPTI-SCRAPE

Opti-Scrape is an attractive and high performing scraper entrance mat designed for high traffic commercial business entrances. Conforms to AS ISO 9239.1 for flooring products

PRODUCT PERFORMANCE

ABSORPTION	✓✓✓
APPEARANCE	✓✓✓✓✓
SOIL REMOVAL	✓✓✓✓✓
WEAR	✓✓✓✓✓

FEATURES

- Scraper surface removes heavy soil and debris
- Slip resistant surface
- Non-skid backing prevents movement
- Can be recessed into the floor or edged for loose laying
- Attractive and stylish design
- Ideal for commercial buildings, shopping centres and education facilities



CODE	SIZE
OP100CHL	1000mm Runner
OP200CHL	2000mm Runner

8mm thick



PREMIUM SCRAPE

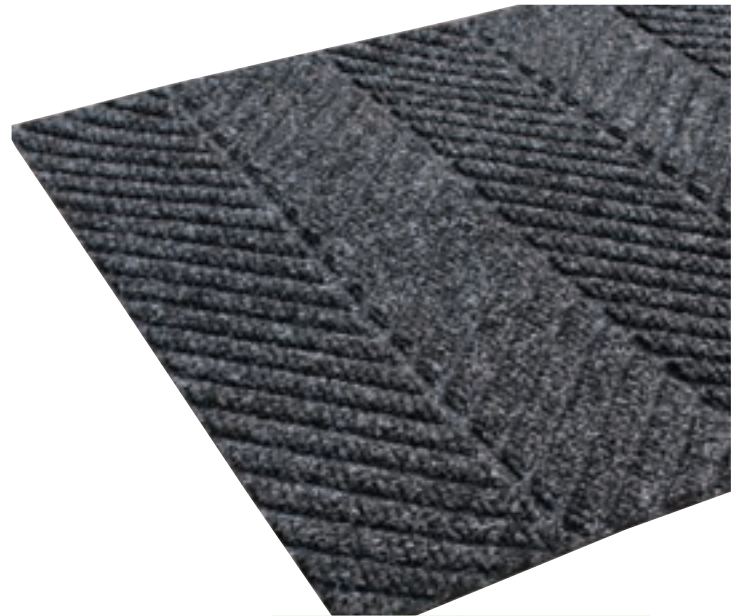
Premium Scrape is a heavy duty, indoor or outdoor Entrance Mat. It is used recessed in entrances or lifts or loose laid in entry ways or lobbies in Commercial buildings, schools and shopping centres.

PRODUCT PERFORMANCE

ABSORPTION	✓✓✓✓✓
APPEARANCE	✓✓✓✓✓
SOIL REMOVAL	✓✓✓✓
WEAR	✓✓✓✓✓

FEATURES

- Great versatility when it comes to custom cut applications & large entrance areas
- Constructed using the latest technologies to enhance the performance life & appearance retention
- Constructed using 100% polypropylene fibre which will not fade or rot
- Easy clean & dries quickly
- Optional heavy duty edging available



CODE	SIZE
PS180PEP	1800mm Runner

10mm thick



DURA SCRAPE

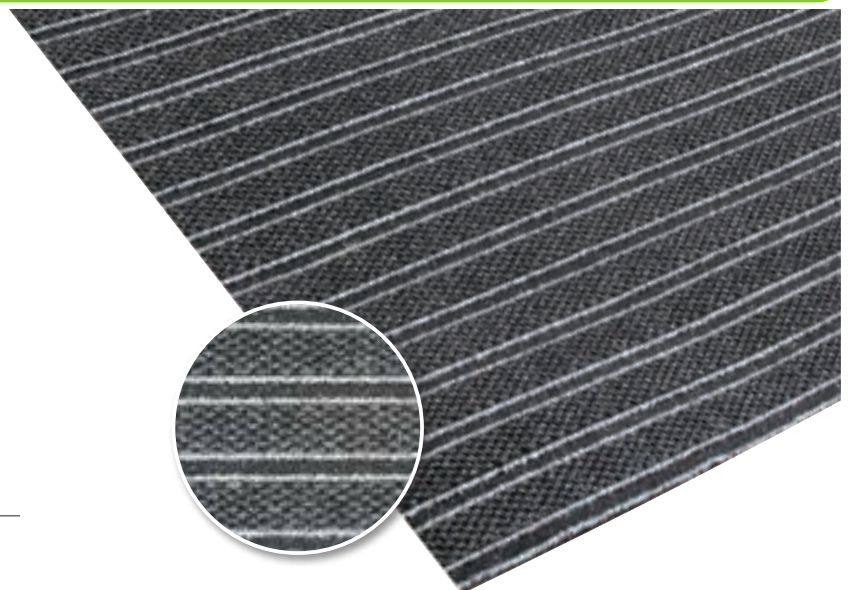
Dura Scrape is a heavy duty, indoor/outdoor entrance mat which performs three important functions - dries, scrapes and collects debris from footwear.

PRODUCT PERFORMANCE

ABSORPTION	✓✓✓✓✓
APPEARANCE	✓✓✓✓✓
SOIL REMOVAL	✓✓✓✓
WEAR	✓✓✓✓✓

FEATURES

- Out-performs aluminum mats in absorbency and wear
- Extremely tough – ideal for very high traffic areas
- The collection zone catches the debris, preventing it from being tracked onto other floor surfaces.
- Wide collection zone helps shake rainwater from trolleys preventing slippery surrounding floors
- Latex back assists mat in adhering to hard floor surfaces



CODE	SIZE
DSC200PEP	2000mm Runner

15mm thick



COCO BRUSH II

The Coco Brush II mat has an ultra-plush finish and is soft under foot giving it an elegant and luxurious feel. This mat has a gripper backing to ensure it stays in place on any floor surface.

Coco Brush II can be imprinted with your logo or message as well as being custom made to your preferred size or shape. Coco Brush II is an attractive, yet functional and easy to clean door mat.

PRODUCT PERFORMANCE

ABSORPTION	✓✓✓✓
APPEARANCE	✓✓✓✓✓
SOIL REMOVAL	✓✓✓✓
WEAR	✓✓✓✓✓



Natural



Black



Brown



Grey



FEATURES

- No mess, no fuss alternative to natural coir
- Ultra-plush surface provides a luxurious and elegant image in any doorway
- Soft and plush feel under foot
- Great scrape and drying mat and is very functional in high traffic entrances
- Gripper backing is great for a variety of floor surfaces
- Easy to clean — traps and contains debris and moisture in the mat

CODE	COLOUR
COII200NAT	Natural
COII200BLK	Black
COII200BRN	Brown
COII200GRY	Grey

12.2mm thick



PVC BACKED COIR

PVC backed coir mat is a natural material that is designed to complement a range of interiors. The coarse and naturally absorbent fibres are high performers when it comes to scraping and cleaning shoes.

PRODUCT PERFORMANCE

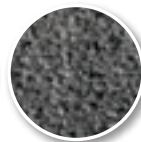
ABSORPTION	✓✓✓✓✓
APPEARANCE	✓✓✓✓✓
SOIL REMOVAL	✓✓✓✓
WEAR	✓✓✓✓✓



Natural



Black
(17mm only)



Grey
(17mm only)



FEATURES

- Indoor or covered outdoor mat for high traffic entrances
- High moisture absorption
- Coarse coir bristles provide excellent scraping to the base of footwear
- PVC backing reduces the dislodging of coir fibres
- Environmentally friendly product

CODE	THICKNESS
PBC17	17mm
PBC24	24mm
PBC30	30mm





LOGO MATS

WHY DO YOU NEED A LOGO MAT?

There is no doubt that having an entrance mat is a high priority for any building or organisation. So why not make them stand out! Logo mats are a great way to help increase brand awareness for your business and create a lasting first impression. Not only are personalised mats fun and great to look at, they are also functional, trapping moisture, dirt and debris from the shoes walking over the mat. Personalised mats are also great for events, pop up shops, shopping centres and more.



**ORDERING IS
AS EASY AS**

1, 2, 3!

- 1. SEND US YOUR LOGO/DESIGN**
- 2. WE'LL CREATE AN ARTWORK PROOF**
- 3. APPROVE, NOW YOUR MAT IS IN PRODUCTION!**

INKJET PRINT PLUS

Logo Mats are a nitrile rubber backed, nylon topped mat for low to medium traffic entrances, indoor or outdoor.

PRODUCT PERFORMANCE

ABSORPTION	✓✓✓✓
APPEARANCE	✓✓✓✓
SOIL REMOVAL	✓✓✓
WEAR	✓✓✓



FEATURES

- A great way to get your message across to everyone that comes through your door
- Hard wearing nylon plush pile surface effectively wipes and dries footwear
- Nitrile rubber backing and borders will not crack or curl
- Can be machine washed
- Used in medium to high traffic areas, indoor or outdoor
- Available in a range of colours — ask us for a colour guide

CODE	SIZE
LM23	600 x 850mm
LM34	850 x 1200mm
LM35	850 x 1500mm
LM46	1150 x 1750mm

7mm thick



TOUGH SCRAPE

Logo Mat - Tough Scrape Design are an excellent way to create an impression or get a message across to everyone who walks through your door. They are used in high traffic areas such as entrances, lobbies, reception areas or walkways. Suitable for indoor applications

PRODUCT PERFORMANCE

ABSORPTION	✓✓✓✓✓
APPEARANCE	✓✓✓✓
SOIL REMOVAL	✓✓
WEAR	✓✓✓✓



CODE	SIZE
FPTS	Made to measure

8mm thick



FEATURES

- Coarse fibres scrape dirt and debris from footwear
- Solution dyed to prevent fading
- Easy to clean – dries quickly
- High water absorption
- Optional heavy duty edging available
- Available in a range of colours — ask us for a colour guide



ANTI-FATIGUE MATS

HOW TO CHOOSE THE RIGHT ANTI-FATIGUE MAT?

FLOOR SURFACE:

Evaluate the surface where the mat is going to be placed. Is it on carpet or a hard floor like concrete? This is important as it determines the type of backing grip on that mat. Some mats have non-slip rubber surfaces to grip well on carpet, whereas others have suction cups to prevent movement on hard floors.

FOOT TRAFFIC:

Knowing the volume of foot traffic where the mat is going to be placed determines the level of durability and resiliency needed in the mat. A fully moulded mat will outlast a similar style in a bonded version.

LOCATION:

There are different types of anti-fatigue mats for different environments. Dry area anti-fatigue mats are ideal for offices and warehouses whereas wet area anti-fatigue mats are designed for kitchens or work areas where there is water or grease.

WHY DO WE NEED ANTI-FATIGUE MATS?

It is known that undertaking work that requires long periods of standing can cause physical fatigue including back, neck and shoulders, leg and foot pain. Anti-fatigue mats are designed to reduce body stress and fatigue in various environments resulting in increased productivity and happier employees.

PRODUCT PERFORMANCE GUIDE

COMFORT:

The level of comfort the mat provides as an alternative to standing on a hard surface

GRIP:

The surface of the mat and how well it provides traction in slippery areas

WEAR:

How well the mat lasts in high traffic areas over time

DRAINAGE:

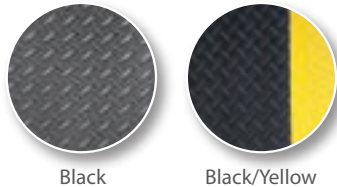
How well moisture flows through the mat

SOFT FOOT DIAMOND DELUXE

Soft Foot Diamond Deluxe matting is an ultra comfortable anti-fatigue mat made from a thick closed cell PVC foam. It is used in dry areas such as checkouts, counters, production lines, warehouses and much more.

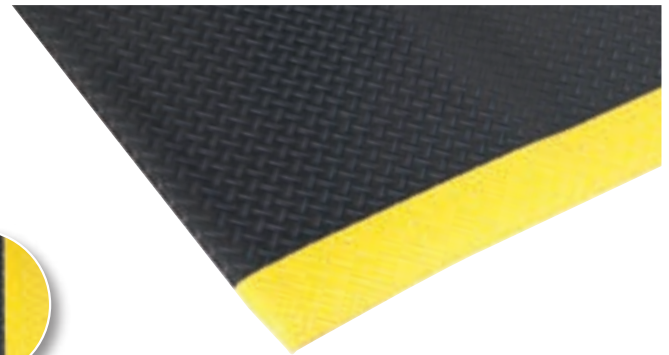
PRODUCT PERFORMANCE

WEAR	✓✓✓
COMFORT	✓✓✓✓✓
GRIP	✓✓✓



FEATURES

- Comfortable cushion surface provides relief from constant standing.
- Checker plate surface provides grip for user.
- Made from closed cell foam which will not absorb liquids.
- Easy to cut - can be trimmed to shape or size.
- Easy to clean - can be swept, mopped or wiped clean.
- Safety border option increases visibility of mat
- HACCP certified for use in dry areas



CODE	SIZE
SSDM23BLK	600 x 900mm
SSDM23YEL	600 x 900mm
SSDM35BLK	900 x 1500mm
SSDM35YEL	900 x 1500mm

13mm Thick

RUNNER WIDTHS:
900mm



COMFORT STAND II

Comfort Stand II is an ultra-comfortable anti-fatigue and anti-slip Mat. It is made from a thick, dense, durable, one-piece Polyurethane closed cell foam. Comfort Stand II is used at sit/stand desks, or at check-outs, concierge areas, counters, domestic kitchens, meet & greet areas, workstations and so on.

PRODUCT PERFORMANCE

WEAR	✓✓✓✓✓
COMFORT	✓✓✓✓✓✓✓
GRIP	✓✓✓✓✓✓

FEATURES

- Ultra comfortable foam provides unparalleled relief when standing.
- Fine leather grain surface gives excellent traction.
- Closed cell foam construction will not absorb water thus making it suitable to use in light wet areas.
- Made from Polyurethane which is lightweight yet firm and supportive, and will always spring hold its shape.
- The Mat is PVC free which is odourless and harmless to people with allergies to PVC.
- Easy to clean - Mat can be brushed, mopped or wiped to clean



CODE	SIZE
COT23CHL	500 x 750mm

20mm Thick

AIR GRID

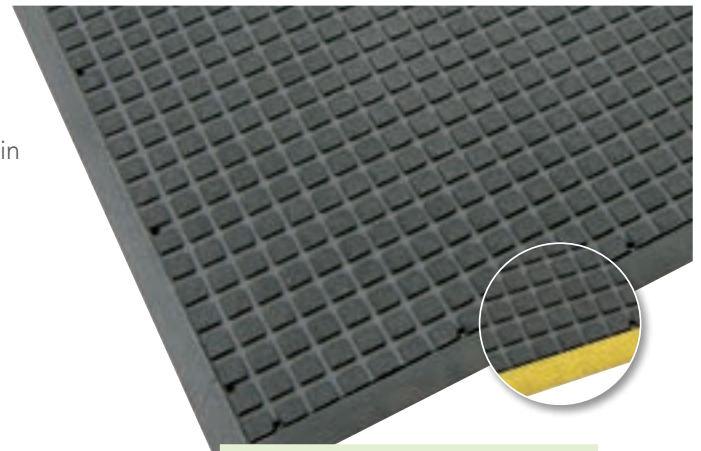
Air Grid is a hardwearing, comfortable, non-slip anti-fatigue mat. It is used in demanding work areas such as benches, counters, machines and workstations. Can also be used also in wet areas like bars, food preparation areas and kitchens.

PRODUCT PERFORMANCE

WEAR	✓✓✓✓✓
COMFORT	✓✓✓✓✓
GRIP	✓✓✓✓✓

FEATURES

- Soft rubber formula provides relief and comfort when standing
- Raised squares on mat surface provides a flat standing surface
- Rippled patterned mat surface gives mat extra traction
- Non trip bevelled edges for added safety and reduces the chance of tripping on mat edges
- Drainage holes around mat perimeter allows removal of any spilt liquids
- Available with black or yellow safety borders
- HACCP certified for use in wet or dry areas



CODE	SIZE
AG23BLK	600 x 900
AG23YEL	600x x900
AG34BLK	900x x1200
AG34YEL	900x x1200

14mm thick

RUNNER WIDTHS:
600mm, 900mm, 1200mm



DURA STEP

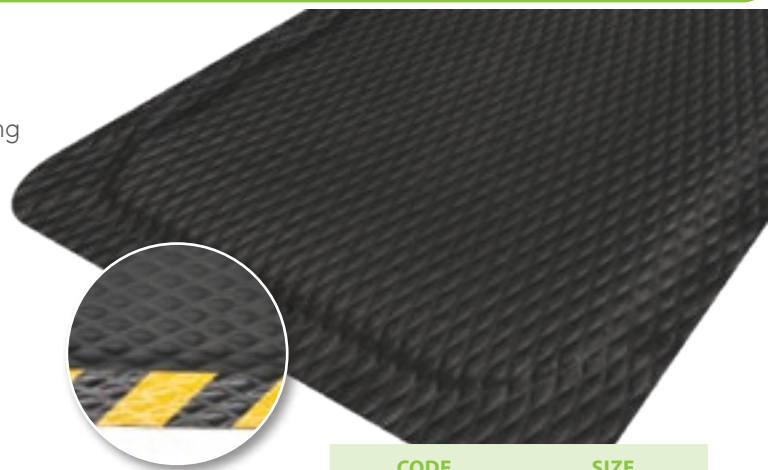
Dura Step matting is an ultra comfortable anti-fatigue and non-slip mat. It is made from nitrile rubber sheeting bonded to thick closed cell Nitrile Rubber foam. It is used in dry areas such as checkouts, counters, production lines, warehouses and much more.

PRODUCT PERFORMANCE

WEAR	✓✓✓✓✓
COMFORT	✓✓✓✓✓
GRIP	✓✓✓✓✓

FEATURES

- Soft nitrile rubber foam underside provides relief and comfort when standing
- Raised diamond patterned surface gives excellent traction
- Made from nitrile rubber which is grease and oil proof
- Non trip bevelled edges are safe and suitable for trolley wheels
- Smooth surface is easy to clean
- Mat can easily be cut or modified to shape and size
- HACCP certified for use in dry areas



CODE	SIZE
DUR23BLK	600 x 850mm
DUR23YEL	600 x 850mm
DUR35BLK	850 x 1500mm
DUR35YEL	850 x 1500mm

15mm thick

RUNNER WIDTHS:
600mm, 900mm, 1200mm



SAFETY CUSHION MAT

Safety Cushion is a non-slip comfortable safety mat for wet or dry areas. It is used behind bars, counters, factories, food preparation areas, at work benches or work stations.

PRODUCT PERFORMANCE

WEAR	✓✓✓✓
COMFORT	✓✓✓✓
GRIP	✓✓✓✓
DRAINAGE	✓✓✓✓✓



Terracotta
(Grease Proof)

Yellow
Border



FEATURES

- Made from soft rubber compound which relieves strains from constant standing.
- Honeycomb design surface provides grip in wet areas.
- Drainage holes leave mat surface dry preventing slips.
- Bevelled edges eliminate trips or falls on mat edges.
- Grease proof option - mat will not deteriorate in high grease or oil use areas.
- Yellow border option increases visibility on mat edges.
- HACCP Certified.

CODE	SIZE
CLS	600 x 900mm
CLN	900 x 1500mm
CLY	900 x 1500mm (YB)
CLG	600 x 900mm (GP)
CLR	900 x 1500mm (GP)

12mm thick
(YB): Yellow Border
(GP): Grease Proof



CUSHION EASE

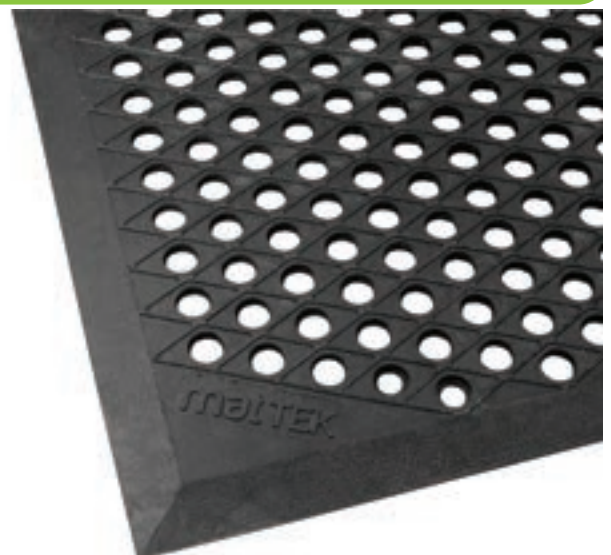
Cushion Ease is a high performance safety mat used in bars, kitchen and industrial applications. This mat is made from flexible grease and chemical resistant rubber to prevent cracking and prevent the mat from marking your floors.

PRODUCT PERFORMANCE

WEAR	✓✓✓✓
COMFORT	✓✓✓✓✓
GRIP	✓✓✓✓
DRAINAGE	✓✓✓✓✓

FEATURES

- Lightweight rubber formula makes the mat easy to handle
- Soft rubber feel provides excellent comfort when standing for long periods of time and reduces the risk of cramping and varicose veins
- Near-level surface is easy and effortless to clean and maintain
- The mat's 50% Nitrile Rubber compound gives it superior chemical and grease resistance and will extend its life in demanding environments
- Synthetic rubber formula eliminates the risk of the mat marking the floor it is placed on



CODE	SIZE
CU35BLK	850 x 1450mm

10mm thick

COMFORT CLEAN

Comfort Clean is a nitrile rubber mat used for anti-fatigue and anti-slip purposes. It is used in wet or dry areas such as behind bars, counters, in food preparation, kitchen areas, laboratories, steel fabrication and industrial workshops.

PRODUCT PERFORMANCE

WEAR	✓✓✓✓
COMFORT	✓✓✓✓
GRIP	✓✓✓✓✓
DRAINAGE	✓✓✓✓

FEATURES

- Ultra comfortable
- Made from a special formula of nitrile rubber.
- Resists all chemicals, oils, greases and fats.
- Non-slip base & top.
- Closed cell foam does not absorb liquid.
- Holed surface to allow for excellent drainage.
- HACCP certified



CODE	SIZE
NIK23H	570 x 850mm (holed)
NIK35H	850 x 1440mm (holed)
NIK46H	1080 x 1690mm (holed)
NIK310H	850 x 2700mm (holed)

10mm thick

CUSHION TREAD

Cushion Tread is a comfortable, non-slip safety mat for wet or dry areas. It is used behind bars, at food preparation areas, kitchens, machines, work benches or work stations.

PRODUCT PERFORMANCE

WEAR	✓✓✓✓✓
COMFORT	✓✓✓✓
GRIP	✓✓✓✓
DRAINAGE	✓✓✓✓✓

FEATURES

- Soft rubber compound provides relief and comfort when standing
- Rippled patterned surface provides excellent traction, decreasing the risk of slips
- Non trip bevelled edges are safe and suitable for trolley wheels
- Large holes allow rapid drainage of spilt liquids
- Made from 100% nitrile rubber which makes the mat grease proof
- Anti-microbial formula discourages the growth of microbes and bacteria on the mat surface
- Lightweight and easy to handle
- Easy to clean – can be machine washed or brushed, hosed, mopped or steam cleaned easily and effectively



CODE	SIZE
TR35	960 x 1560mm

10mm thick



ENGINEERS MAT

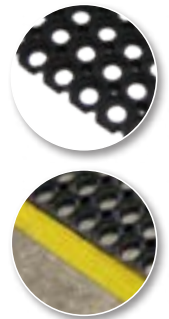
Engineers Mat is an extremely heavy duty, comfortable, anti-slip mat used in demanding work areas such as engineering and mechanical workshops, steel fabrication areas and much more.

PRODUCT PERFORMANCE

WEAR	✓✓✓✓
COMFORT	✓✓✓✓✓
GRIP	✓✓✓✓
DRAINAGE	✓✓✓✓✓

FEATURES

- Soft rubber compound relieves strains from constant standing
- Honeycomb design surface provides grip in wet areas
- Large drainage holes allow mat to drain keeping the surface dry which prevents slips
- Bevelled edge option available in safety yellow, eliminating trips or falls on mat edges
- Heavy duty construction - resists common chemicals and hot swarf



CODE	SIZE
ENG35	1000 x 1500mm
ENG35YEL	1000 x 1500mm

22mm thick

ULTRA STAND

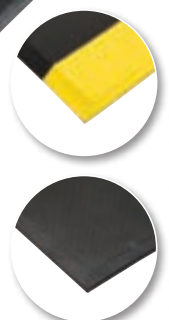
Ultra Stand is an extremely comfortable anti-fatigue mat for demanding work areas. Used in food preparation areas, processing areas, laboratories or operating theatres.

PRODUCT PERFORMANCE

WEAR	✓✓✓✓✓
COMFORT	✓✓✓✓✓
GRIP	✓✓✓✓✓

FEATURES

- Provides relief from constant standing.
- Non-slip base and top reduces trips and slips.
- Closed cell foam structure does not absorb liquids.
- Easy to clean - auto clivable or machine washable.
- Made from nitrile rubber which is resistant to chemicals, greases and oils.
- Anti-microbial additive eliminates the growth of bacteria on the mat.



CODE	SIZE
US23BLK	600 x 900mm
US23YEL	600 x 900mm
US35BLK	900 x 1500mm
US35YEL	900 x 1500mm

17mm thick

RUNNER WIDTHS:
600mm, 900mm

SOLID TOP ANTI-FATIGUE

Solid top anti-fatigue is a durable and versatile anti-fatigue mat. The sections link together to form your required length.

PRODUCT PERFORMANCE

WEAR	✓✓✓✓
COMFORT	✓✓✓
GRIP	✓✓✓✓

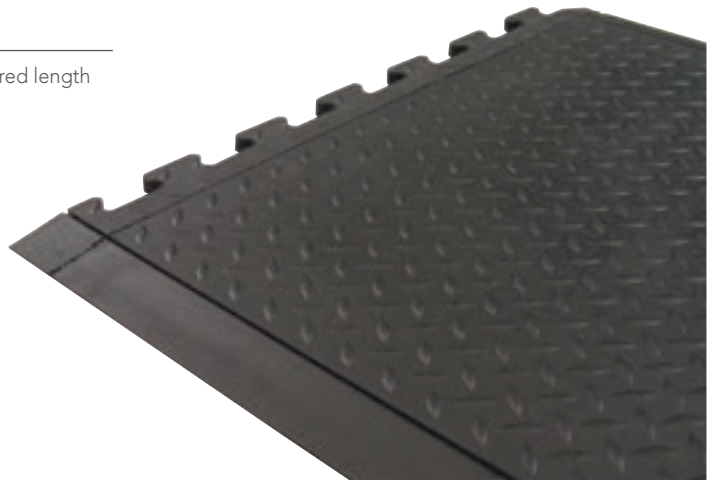
FEATURES

- End and centre modules join together easily and quickly to form a desired length
- Mats come apart easily for cleaning or modifying purposes
- Checker plate patterned top provides a non-slip walking surface
- Non trip bevelled edges are safe and suitable for trolley wheels



CODE	SIZE
STAS - single	700 x 800mm
STAC - centre	700 x 800mm
STAE - end	700 x 800mm

15mm thick



ERGO TRED MODULAR

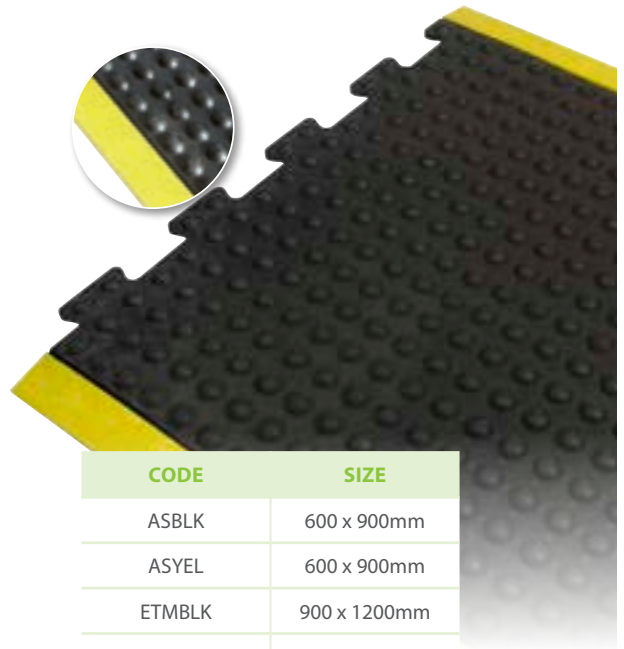
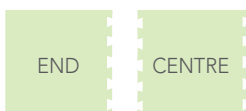
Ergo Tred is a hardwearing, comfortable, non-slip anti-fatigue mat. It is used in dry, demanding work areas such as at checkouts, counters, machines, work benches and workstations.

PRODUCT PERFORMANCE

WEAR	✓✓✓✓
COMFORT	✓✓✓✓
GRIP	✓✓✓✓

FEATURES

- Suited to relieve the strain of constant standing
- Domed surface ergonomically designed to improve circulation and give maximum comfort
- Ideal for checkouts, workstations and counters
- 100% natural rubber



CODE	SIZE
ASBLK	600 x 900mm
ASYEL	600 x 900mm
ETMBLK	900 x 1200mm
ETMYEL	900 x 1200mm

16mm thick

RUNNER WIDTHS:
600mm, 900mm, 1200mm



WELDING MAT

Welding Mat is a modular, anti-slip and anti-fatigue mat used in welding areas.

PRODUCT PERFORMANCE

WEAR	✓✓✓✓
COMFORT	✓✓✓
GRIP	✓✓✓✓

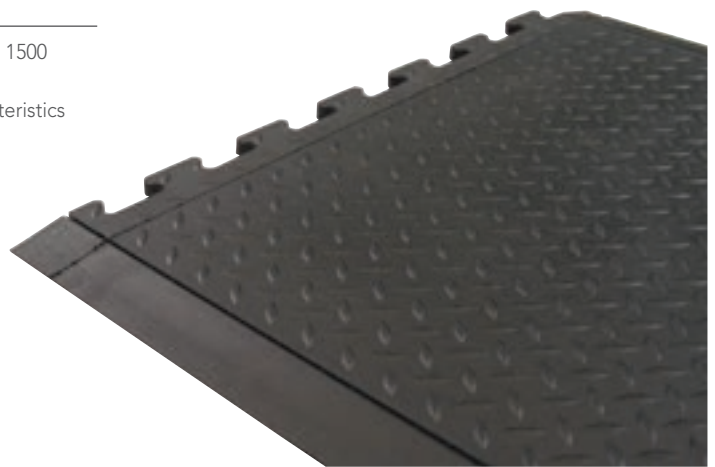
FEATURES

- Specially designed to resist welding flux and grinding sparks of 1300 to 1500 centigrade for less than 3 seconds
- Excellent durability and highly resistant surface for load bearing characteristics
- Can be used in both greasy and dry environments
- Reduces fatigue during prolonged standing
- Chequer plate design provides a non-slip surface



CODE	SIZE
WMS - single	700 x 800mm
WMC - centre	700 x 800mm
WME - end	700 x 800mm

10mm thick



BOOT DIP MAT

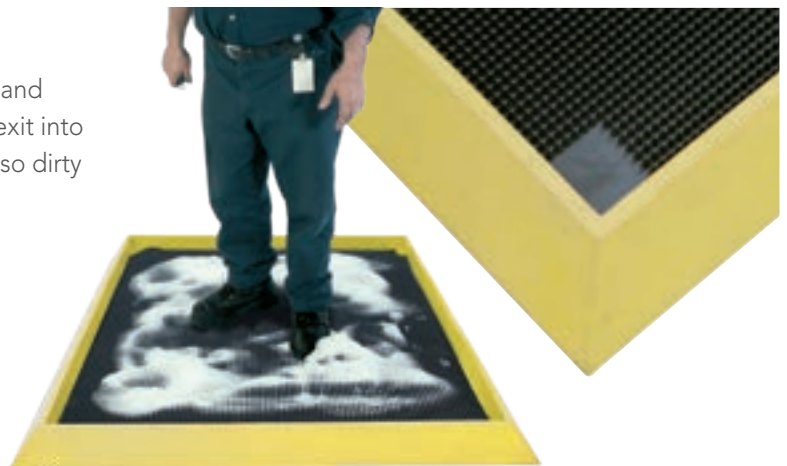
Our Boot Dip Mat is designed to be filled with water and disinfectant and is used to clean boots on entry and exit into abattoirs, clean rooms, food processing plants and also dirty manufacturing plants.

PRODUCT PERFORMANCE

WEAR	✓✓✓✓
COMFORT	✓✓✓
GRIP	✓✓✓✓✓
DRAINAGE	✓✓✓✓✓

FEATURES

- Hundreds of bristles encourage boot cleaning whilst trapping dirt
- Raised walls to hold anti-germ detergent or any liquid for hygienic cleaning
- Yellow edges for high visibility
- Cross grip rear design firmly holds the mat on the floor
- HACCP certified



CODE	SIZE
BDM	810 x 980mm

47mm thick



ANTI-SLIP MATS

HOW TO CHOOSE THE RIGHT ANTI-SLIP MAT?

FOOT TRAFFIC:

Knowing the volume of foot traffic where the mat is going to be placed determines the level of durability and resiliency needed in the mat.

LOCATION:

The location of the anti-slip matting is important as this determines the features of the mat. You may need a mat with holes to allow for drainage, for example in a commercial kitchen or external area exposed to rain, or perhaps it needs have bevelled edges to allow for wheeled traffic access.

WHY DO WE NEED ANTI-SLIP MATTING?

Anti-slip matting is important as it can prevent slips, trips and falling in the workplace. Anti-slip matting is often used in areas where there is water present such as swimming pools and showers, or where there are smooth hard surfaces like shopping centres, ramps, kitchens etc.

PRODUCT PERFORMANCE GUIDE

GRIP:

The surface of the mat and how well it provides traction in slippery areas

WEAR:

How well the mat lasts in high traffic areas over time

DRAINAGE:

How well moisture flows through the mat

TRUE GRIP

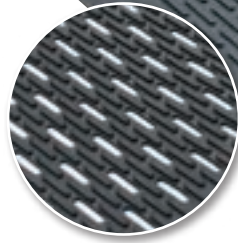
True Grip is a non-slip safety mat for greasy, slippery and wet areas.

PRODUCT PERFORMANCE

WEAR	✓✓✓✓
COMFORT	✓✓
GRIP	✓✓✓✓
DRAINAGE	✓✓✓ (HOLED)

FEATURES

- Raised lugs on surface provides good traction, decreasing the risk of slips
- Non trip bevelled edges are safe and suitable for trolley wheels
- Holed option allows rapid drainage of spilt liquids
- HACCP certified for use in wet or dry areas



CODE

SIZE

TG35

900 x 1500mm

TG35H

900 x 1500mm (holed)

6mm thick

MAXI GRIP

PRODUCT PERFORMANCE

WEAR	✓✓✓✓✓
COMFORT	✓
GRIP	✓✓✓✓✓

FEATURES

- Raised gripper surface provides traction in slippery areas
- Nitrile rubber compound resists damaging effects of grease and fats
- Reversible - either side can be used
- Ideal for wet slippery areas such as ramps, kitchens, machine shops, grocery stores, supermarkets and florists
- HACCP certified

CODE

SIZE

UG35

900 x 1500mm

UG310

900 x 3000mm

UG46

1200 x 1800mm

3.5mm thick

ANTI-SLIP MATTING

COMFORT CLEAN GRIT TOP

Comfort Clean Grit Top is a 100% nitrile rubber mat used for anti-fatigue and anti-slip purposes. It is used in very slippery areas due to high levels of grease, oil or water such as kitchens, at steel machinery and wash up bays.



PRODUCT PERFORMANCE

WEAR	✓✓✓✓✓
COMFORT	✓✓✓✓
GRIP	✓✓✓✓✓
DRAINAGE	✓✓✓✓

FEATURES

- Made from 100% Nitrile rubber ensuring mat is resistant to greases, oils and common chemicals
- Closed cell "sponge" formula provides relief from constant standing
- Anti-microbial formula resists the growth of bacteria and microbes on mat
- Grit coated surface provides unparalleled traction, eliminating slips
- Bevelled edges eliminate trips or falls on mat edges
- Easy to clean - hose, pressure, steam clean or machine wash
- Drainage holes allow liquid to drain from mat quickly and easily

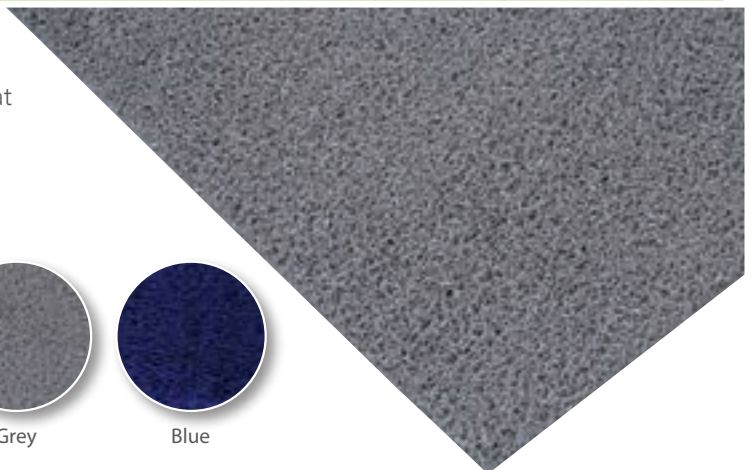
CODE	SIZE
NIK35HG	900 x 1500mm

9mm thick



CLEAN LOOP MATTING UNBACKED

Clean Loop matting is a heavy duty mat used recessed at entrances or as a non-slip in bathrooms, changerooms, showers or beside pools

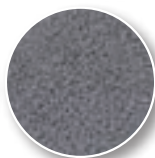


PRODUCT PERFORMANCE

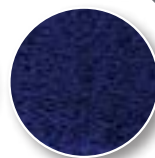
WEAR	✓✓✓✓✓
COMFORT	✓✓✓✓✓
GRIP	✓✓✓✓✓
DRAINAGE	✓✓✓✓✓



Black



Grey



Blue

FEATURES

- Can be used indoors or outdoors
- Soft, spongy loop design provides a comfortable and non-slip walking surface
- Firm PVC loops give a powerful scrub to the base of footwear
- Open design allows quick drainage leaving the top of the mat dry
- Collects dirt and debris from footwear and hides it from sight
- Easy to clean – can be hosed, shaken or vacuumed out

CODE	COLOUR
CEU1200BLK	Black
CEU1200GRY	Grey
CEU1200BLU	Blue

14mm thick



SAFEGUARD DELUXE

Safeguard Deluxe matting is a heavy duty mat used recessed at entrances or as a non-slip in bathrooms, changerooms, showers or beside pools

PRODUCT PERFORMANCE

WEAR	✓✓✓✓
COMFORT	✓✓✓
GRIP	✓✓✓✓
DRAINAGE	✓✓✓✓✓

FEATURES

- Can be used indoors or outdoors
- Firm yet comfortable feel provides a comfortable walking surface
- Zig zag design gives excellent traction
- Open design allows quick drainage leaving the top of the mat dry
- PVC formula is chemical, grease and oil resistant
- Easy to clean – can be hosed, pressure washed and scrubbed



CODE	SIZE
SD900GRY	900mm Runner
SD1200GRY	1200mm Runner

12mm thick

UTILITY MATTING

Utility matting is a versatile safety matting on a roll. It is comfortable and non-slip. It is used behind bars and counters, in factories, work stations and also in boats, utes or vans.

PRODUCT PERFORMANCE

WEAR	✓✓✓✓
COMFORT	✓✓✓✓
GRIP	✓✓✓✓✓
DRAINAGE	✓✓✓✓✓

FEATURES

- Can be used indoors or outdoors
- Firm yet comfortable feel provides a comfortable walking surface
- Drainage holes and channels allow quick drainage of liquids, leaving the top of the mat dry
- Mat is easy to cut and shape, making it easy to fit into specific areas
- Easy to clean – can be hosed, pressure washed and scrubbed



CODE	SIZE
UM900	900mm Runner
UM1800	1800mm Runner

10mm thick





CHAIR MATS

HOW TO CHOOSE THE RIGHT CHAIR MAT?

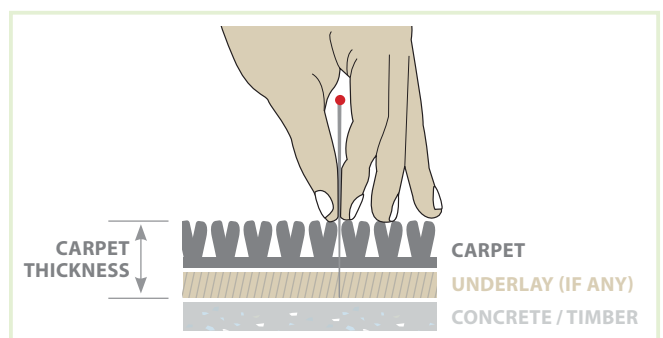
FLOOR SURFACE:

Evaluate your floor surface. Do you have carpet or hard floors like tiles, timber or polished concrete? The floor surface will determine the gripping on the back of the mat and help to ensure you get the maximum life out of your mat.

THICKNESS/SIZE:

It's important to measure the thickness of the carpet and underlay where the chair mat will be placed. A chair mat that is light weight or too thin may cause cracking and create impressions from the chair, causing difficulty when moving around.

To do this, insert a pin into the carpet and through the underlay. Once the pin hits the hard surface underneath, grip the pin at the highest point of the carpet and remove. Measure from that point to the end of the pin and this will tell you the total height of your carpet.



WHY DO WE NEED CHAIR MATS?

Chair mats offer a layer of protection to floor surfaces, reducing scuffs and scratches on hard floors and wearing down of fibres in carpet. As well as protection, chair mats create ease when moving around the workplace on a rolling chair, especially on carpet. Chair mats also prevent the strain on your back and legs that is often experienced when pulling in your office chair on carpeted floors.

The Anchormat Chair Mat is Australia's most durable chair mat. With designs that cater to carpet with and without underlay, and hard floors, the Anchormat Chair Mat range is suitable for all office types. These chair mats are designed to protect floor coverings from wear and tear of chair wheels, as well as providing a level of comfort and ease when moving around the workplace. Anchormat Chair Mats are made from pure PVC that is twice extruded and does not contain banned substances. They are also delivered flat, not rolled, which means they are safe to use immediately.

FEATURES

- Protects floor coverings from wear and tear from chair casters without damaging the surface underneath
- Greatly reduces wear on office chair wheels and bases
- Bevelled edges to prevent trips and allow ease of rolling on or off the mat
- Allows chair wheel movements to be easier on your back
- Can be fully recycled after use and contains no banned substances
- Anchors on the underside prevent mats moving when in use



ANCHORMAT - HEAVYWEIGHT



CARPETS AND UNDERLAY UP TO 12MM THICK

CODE	SIZE	STYLE
AMH34G	915 x 1220mm	Secretary (With Lip)
AMH45G	1150 x 1350mm	Executive (With Lip)
AMH50G	1160 x 1510mm	Diplomat (Rectangle)

ANCHORMAT - DELUXE

CARPETS AND UNDERLAY UP TO 30MM THICK

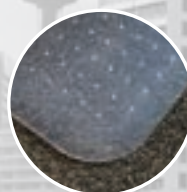
CODE	SIZE	STYLE
AMD34G	915 x 1220mm	Secretary (With Lip)
AMD45G	1150 x 1350mm	Executive (With Lip)
AMD50G	1160 x 1510mm	Diplomat (Rectangle)

ANCHORMAT - NO ANCHORS



HARD FLOORS

CODE	SIZE	STYLE
AMH34S	915 x 1220mm	Secretary (With Lip)
AMH45S	1150 x 1350mm	Executive (With Lip)
AMH50S	1160 x 1510mm	Diplomat (Rectangle)



PRODUCT USAGE GUIDE

PRODUCT	VERY HIGH TRAFFIC	HIGH TRAFFIC	MEDIUM TRAFFIC	LOW TRAFFIC	OUTDOOR (NO COVER)	OUTDOOR (UNDER COVER)	INDOOR	RECESSED	LOOSE LAID
Esteem Ribbed II			✓	✓		✓	✓		✓
Floor Shield		✓	✓			✓			✓
Ribbed Mat			✓	✓			✓	✓	✓
Wondersorb			✓	✓			✓	✓	✓
Prestige Mat		✓	✓	✓		✓	✓		✓
Absorba Mat	✓	✓	✓	✓		✓	✓	✓	✓
Clean Loop			✓	✓	✓	✓		✓	✓
Rubber Brush Scraper		✓	✓	✓	✓	✓	✓		✓
Opti-Sorb	✓	✓	✓				✓	✓	✓
Opti-Scrape	✓	✓	✓		✓	✓	✓	✓	✓
Premium Scraper	✓	✓	✓			✓	✓	✓	✓
Dura Scrape	✓	✓	✓			✓	✓	✓	✓
Coco Brush II		✓	✓	✓		✓	✓	✓	✓
PVC Backed Coir	✓	✓	✓	✓		✓	✓	✓	
Inkjet Print Plus			✓	✓			✓	✓	✓
Tough Scrape Design	✓	✓	✓			✓	✓	✓	✓
PRODUCT	DRY AREA	WET AREA	GREASE RESISTANT	CHEMICAL RESISTANT	ANTI-SLIP	WELD SAFE	FOOD SAFE	EASY TO CLEAN	WHEELED TRAFFIC SUITABLE
Soft Foot Diamond Deluxe	✓				✓			✓	✓
Comfort Stand II	✓				✓			✓	
Air Grid	✓	✓		✓	✓		✓	✓	✓
Dura Step	✓		✓	✓	✓	✓	✓	✓	✓
Safety Cushion	✓	✓		✓	✓		✓	✓	✓
Cushion Ease	✓	✓		✓	✓		✓	✓	✓
Comfort Clean	✓	✓	✓	✓	✓	✓	✓	✓	✓
Cushion Tread	✓	✓	✓	✓	✓		✓	✓	✓
Engineers Mat	✓	✓			✓				✓
Ultra-Stand	✓	✓	✓	✓	✓		✓	✓	✓
Solid Top Anti-Fatigue	✓				✓			✓	✓
Ergo Tred Modular	✓				✓			✓	
Welding Mat	✓			✓	✓	✓		✓	✓
Boot Dip Mat	✓	✓	✓	✓	✓		✓	✓	✓
True Grip	✓	✓	✓		✓		✓	✓	✓
Maxi Grip	✓	✓	✓	✓	✓	✓	✓	✓	✓
Comfort Clean Grit Top	✓	✓	✓	✓	✓	✓			✓
Clean Loop Unbacked	✓	✓	✓	✓	✓			✓	✓
Safeguard Deluxe	✓	✓	✓		✓				✓
Utility Matting	✓	✓			✓		✓	✓	✓

CHEMICAL RESISTANCE GUIDE

	ACETIC ACID	ACETONE	ANIMAL FATS	BRAKE FLUID	BUTYL ALCOHOL	CHLORINE (WET)	CUTTING FLUID (WATER BASE)	CUTTING FLUID (SOLUTION BASED)	DIESEL OIL	GASOLINE	MEK	MINERAL OIL	NITRIC ACID (DILUTE)	SODIUM HYDROXIDE	SULPHURIC ACID (DILUTE)	TOLUENE	TRANSMISSION FLUID	TRICHLOROETHANE	VEGETABLE OIL	XYLENE
Soft Foot Diamond Deluxe	4	4	3	4	3	4	3	4	4	4	4	3	4	3	4	4	3	4	2	4
Comfort Stand II	4	4	3	4	3	4	3	4	4	4	4	3	4	3	4	4	3	4	2	4
Air Grid	4	4	3	4	3	4	3	4	4	4	4	3	4	3	4	4	3	4	2	4
Dura Step	2	1	1	2	1	1	1	2	1	1	2	1	1	2	1	3	1	2	1	2
Safety Cushion	4	4	3	4	3	4	3	4	4	4	4	3	4	3	4	4	3	4	2	4
Safety Cushion (greaseproof)	3	2	2	1	2	4	4	4	4	4	2	4	3	4	2	4	4	4	2	4
Cushion Ease	4	4	3	4	3	4	3	4	4	4	4	3	4	3	4	4	3	4	2	4
Cushion Ease (greaseproof)	2	1	1	2	1	1	1	2	1	1	2	1	1	2	1	3	1	2	1	2
Comfort Clean	2	1	1	2	1	1	1	2	1	1	2	1	1	2	1	3	1	2	1	2
Cushion Tread	2	1	1	2	1	1	1	2	1	1	2	1	1	2	1	3	1	2	1	2
Engineers Mat	4	4	3	4	3	4	3	4	4	4	4	3	4	3	4	4	3	4	2	4
Ultra Stand	2	2	1	2	1	1	1	2	1	1	4	1	2	3	2	3	2	3	2	4
Solid Top Anti-fatigue	2	2	3	2	2	2	1	2	3	3	4	2	4	1	2	4	2	4	3	4
Ergo Tred Modular	1	1	2	2	2	2	3	4	2	2	2	4	3	4	2	4	4	4	4	4
Welding Mat	4	4	1	3	2	4	1	1	1	1	4	2	2	4	3	4	1	4	1	3
Boot Dip Mat	1	1	1	2	2	2	3	4	2	2	3	4	4	4	2	4	4	4	4	4
True Grip	3	2	2	1	2	4	4	4	4	4	2	4	3	4	2	4	4	4	2	4
Maxi Grip	2	1	1	2	1	1	1	2	1	1	2	1	1	2	1	3	1	2	1	2
Comfort Clean Grit Top	2	1	1	2	1	1	1	2	1	1	2	1	1	2	1	3	1	2	1	2
Clean Loop Unbacked	1	4	1	4	4	1	4	4	3	4	4	4	4	4	3	2	3	4	2	4
Safeguard Deluxe	1	4	1	3	3	1	4	4	3	4	4	4	4	4	3	2	3	4	2	4
Utility Matting	4	4	3	4	3	4	3	4	4	4	4	3	4	3	4	4	3	4	2	4

- 1 = No Effect
- 2 = Little Effect
- 3 = Moderate Effect
- 4 = Not Recommended

This chart should be used only as a general guide. We recommend that an industrial chemist be contacted.

IF YOU WOULD LIKE A TRIAL, PLEASE CONTACT US TO ORDER A SAMPLE TODAY!

CLEANING & MAINTENANCE GUIDE

PRODUCT	SWEEP	STANDARD VACUUM	BRUSH DRIVEN VACUUM	SPOT CLEANING	WET MOP	HOSE OFF	EXTRACTION
Esteem Ribbed II		✓	✓	✓			✓
Floor Shield		✓	✓	✓			✓
Ribbed Mat		✓	✓	✓			✓
Wondersorb		✓	✓	✓			✓
Prestige Mat		✓	✓	✓		✓	✓
Absorba Mat		✓	✓	✓		✓	✓
Clean Loop		✓		✓		✓	
Rubber Brush Scraper	✓			✓		✓	
Opti-Sorb			✓	✓			✓
Opti-Scrape			✓	✓			✓
Premium Scraper			✓	✓			✓
Dura Scrape			✓	✓			✓
Coco Brush II		✓	✓	✓		✓	✓
PVC Backed Coir		✓	✓				
Inkjet Print Plus			✓	✓			✓
Tough Scrape Design			✓	✓			✓
Soft Foot Diamond Deluxe	✓			✓			
Comfort Stand II	✓	✓		✓	✓		
Air Grid	✓			✓		✓	
Dura Step	✓			✓	✓		
Safety Cushion				✓		✓	
Cushion Ease	✓			✓	✓	✓	
Comfort Clean	✓			✓	✓	✓	
Cushion Tread	✓			✓	✓	✓	
Engineers Mat	✓			✓		✓	
Ultra-Stand	✓			✓	✓		
Solid Top Anti-Fatigue	✓			✓	✓		
Ergo Tred Modular	✓			✓	✓		
Welding Mat	✓			✓	✓		
Boot Dip Mat				✓		✓	
True Grip	✓			✓	✓	✓	
Maxi Grip	✓			✓	✓	✓	
Comfort Clean Grit Top				✓		✓	
Clean Loop Unbacked		✓					
Safeguard Deluxe	✓			✓		✓	
Utility Matting	✓			✓		✓	

TRAFFIC LEVEL	SWEEP	STANDARD VACUUM	BRUSH DRIVEN VACUUM	SPOT CLEANING	WET MOP	HOSE OFF	EXTRACTION
Very High Traffic	Daily	Daily	Daily	Immediately on spill	Every day	Daily	Every 2 months
High Traffic	Every Second day	Daily	Every Second Day	Immediately on spill	Every Second day	Daily	Every 4 months
Medium Traffic	Weekly	Twice Weekly	Twice Weekly	Immediately on spill	Twice Weekly	Every Second Day	Every 6 months
Low Traffic	Weekly	Weekly	Weekly	Immediately on spill	Weekly	Twice Weekly	Annually

NOTES

All sizes are nominal, please contact us for exact sizes.

STORE LOCATIONS

NSW			
ABCOE Distributors	Penrith	02 4725 1200	www.abcoe.com.au
B.I.G Hospitality Warehouse	Port Macquarie	02 6581 1033	www.bighospitality.com.au
Central West Distributors	Dubbo	02 6884 4034	www.rapidclean.com.au
Complete Cleaning Supplies	St Peters	02 9516 5577	www.completecleaning.com.au
RapidClean Central Coast	Tuggerah	02 4353 3393	www.rapidcleancentralcoast.com.au
RapidClean Coffs Harbour	Coffs Harbour	02 6652 3544	www.rapidcleancoffs.com.au
RapidClean Griffith	Griffith	02 6964 5755	www.rapidg.com.au
RapidClean Illawarra	North Wollongong	02 4227 2833	www.rapidclean.com.au
RapidClean New England	Armidale	02 6772 7088	www.rapidcleannewengland.com.au
RapidClean Newcastle	Mayfield West	02 4908 2333	www.rapidcleannewcastle.com.au
RapidClean Tamworth	Tamworth	02 6762 5433	www.rapidcleantamworth.com.au
RapidClean Wagga	Wagga Wagga	02 6925 0621	www.rapidcleangriffith.com.au
RapidClean South Coast NSW	Moruya	02 4474 4455	www.rapidcleansouthcoastnsw.com.au
Southern Cross Hygiene	South Lismore	02 6621 2478	www.schygiene.com.au
Whereabout Supply	Moorebank	1300 943 732	www.whereaboutsupply.com.au
ACT			
Dowlings Canberra	Fyshwick	02 6280 6599	www.dowlings.com.au
RapidClean DRB	Fyshwick	02 6280 6992	www.rapidcleandr.com.au
QLD			
Australian Chemicals	Townsville	07 4779 8669	www.austchems.com.au
Bundaberg Cleaning Supplies	Bundaberg	07 4151 7608	www.bundabergcleaningsupplies.com.au
CleanX Cleaning Supplies	Brendale	07 3339 1560	www.cleanx.com.au
JJ Cleaning Supplies	Coopers Plains	07 3255 6162	www.jjcleaningsupplies.com.au
JNL RapidClean	Toowoomba	07 4638 2733	www.jnlindustries.com.au
Lindsey's Cleaning Supplies	Bowen Hills	07 3216 0001	www.lindseys.com.au
Morrison CQ Agencies	North Rockhampton	07 4926 2099	www.mcqagencies.com.au
NQ Cleaning & Paints	Mackay	07 4951 3988	www.nqcp.com.au
RapidClean Gold Coast	Mermaid Waters	07 5572 2284	www.rapidclean.com.au
RapidClean Sunshine Coast	Noosaville	07 5449 0155	www.rapidcleansunshinecoast.com.au
Torquay Supply	Hervey Bay	07 4125 2211	www.torquaysupply.com.au
Ultimate Cleaning Products NQ	Cairns	07 4035 1162	www.ultimatecleaning.com.au
Whereabout Supply	Morningside	07 3902 0900	www.whereaboutsupply.com.au
VIC			
Agrade Cleaning Supplies	Ravenhall	03 9363 4200	www.agradecleaningsupplies.com.au
Cleaners World Gippsland	Traralgon	03 5176 2000	www.rapidclean.com.au
Concept Cleaning Supplies	Wendouree	03 5339 2025	www.conceptcleaningsupplies.com.au
Coolas Cleaning Supplies	Bendigo	03 5441 7750	www.coolascleaningsupplies.com.au
Eastpoint Cleaning Supplies	Wantirna South	03 9801 8940	www.eastpointcleaningsupplies.com.au
Kleenmart Cleaning Supplies	Shepparton	03 5822 2727	www.kleenmart.com.au
Melbourne Cleaning Supplies	Hawthorn East	03 9880 7333	www.melbournecleaningsupplies.com.au
Mildura One Stop Wholesalers	Mildura	03 5023 1700	www.onestopwholesaler.com
RapidClean Geelong	Newcomb	03 5248 2660	www.rapidcleangeelong.com.au
Riverina Cleaning Supplies	Wodonga	02 6024 3914	www.riverinacleaningsupplies.com.au
Victorian Cleaning Supplies	Fairfield	03 9499 1002	www.victoriancleaningsupplies.com.au
Whereabout Supply	Keilor East	1300 943 732	www.whereaboutsupply.com.au
TAS			
RapidClean Tasmania	Launceston	03 6326 9222	www.rapidcleantas.com.au
SA			
Floormaster	Greenacres	08 8369 1883	www.floormaster.com.au
Westcoast Supplies	Whyalla	08 8645 2503	www.rapidclean.com.au
WA			
Clean Kimberley	Broome	08 9192 6318	www.rapidclean.com.au
CleanPak Total Solutions	Geraldton	08 9921 7077	www.cleanpak.com.au
Lorraine Distributors	Albany	08 9841 4699	www.rapidclean.com.au
PowerVac	Osborne Park	08 9242 4751	www.powervac.com.au
Prestige Products	Busselton	08 9752 4477	www.rapidclean.com.au
South Coast Food Service	Esperance	08 9072 1062	www.southcoastfoods.com.au
The Goods	Belmont	08 9200 3438	www.thegoods.com.au
NT			
Principal Products	Alice Springs	08 8952 1138	www.principalproducts.com.au
RapidClean NT	Darwin	08 8947 0590	www.rapidclean.com.au

RAPIDCLEAN ARE NOW IN NEW ZEALAND - VISIT WWW.RAPIDCLEAN.CO.NZ TO FIND OUR NEW STORES



Rapid Group Co-operative Ltd

ABN: 70 065 227 312

Unit 3, 76 Regentville Road, Penrith, NSW 2750

02 4721 1993 | sales@rapidclean.com.au | www.rapidclean.com.au